



# CONNECT

PLAN MANAGE OPTIMISE

Plan, track, manage and report in  
real-time, to fully optimise your  
supply chain



# CONNECT

●●● PLAN ●●● MANAGE ●●● OPTIMISE ●●●

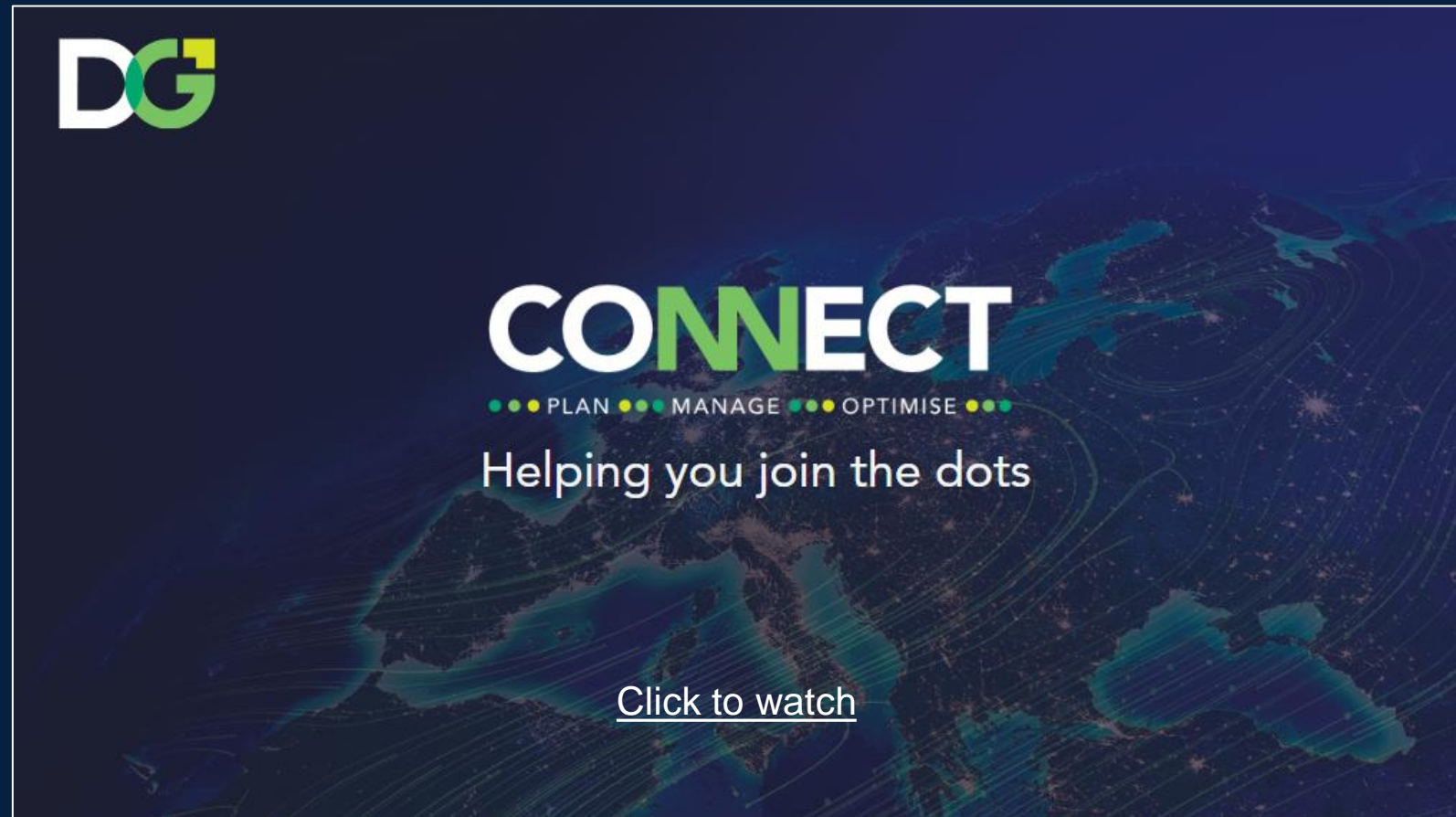
In the digital age, where speed, accuracy, and customer satisfaction are paramount, it is a necessity that we provide our customers with real-time visibility of all the BIG data they require to enhance operational efficiencies and provide a streamlined supply chain process.

Connect, our modern digital tracking platform, allows you to save time, reduce manual operations, and increase efficiencies.

- ✓ Effective shipment management
- ✓ Seamless order processing & management
- ✓ Centralised documents
- ✓ Exception management
- ✓ Data analytics & insights for informed decisions



■ Watch our demo video



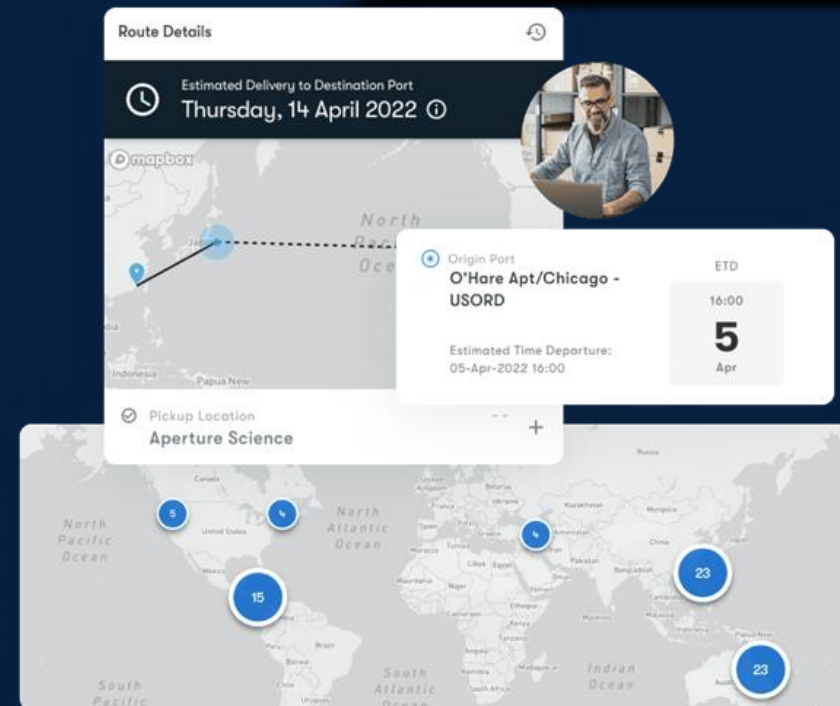
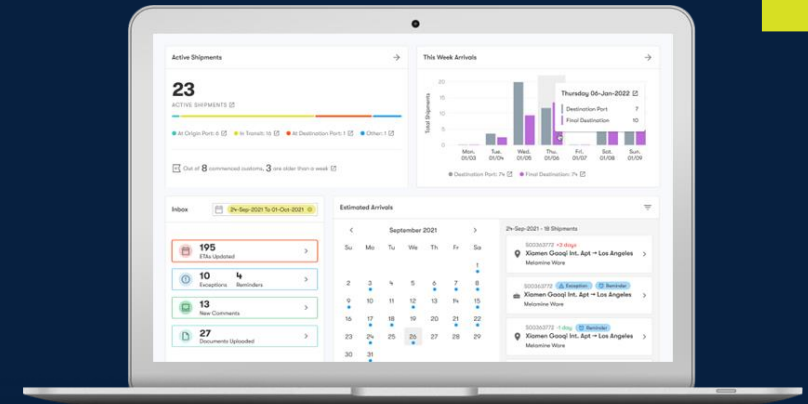


# Centralised Documents

You can upload, download, and get quick access to all documents. Managing documents digitally ensures accuracy and compliance. Real-time updates on document status prevent delays and facilitate smoother cross-border movements

# Real-Time Shipment Tracking

Our centralised platform allows you to track shipments in real-time, monitor their progress, and proactively address any issues that may arise during transit.



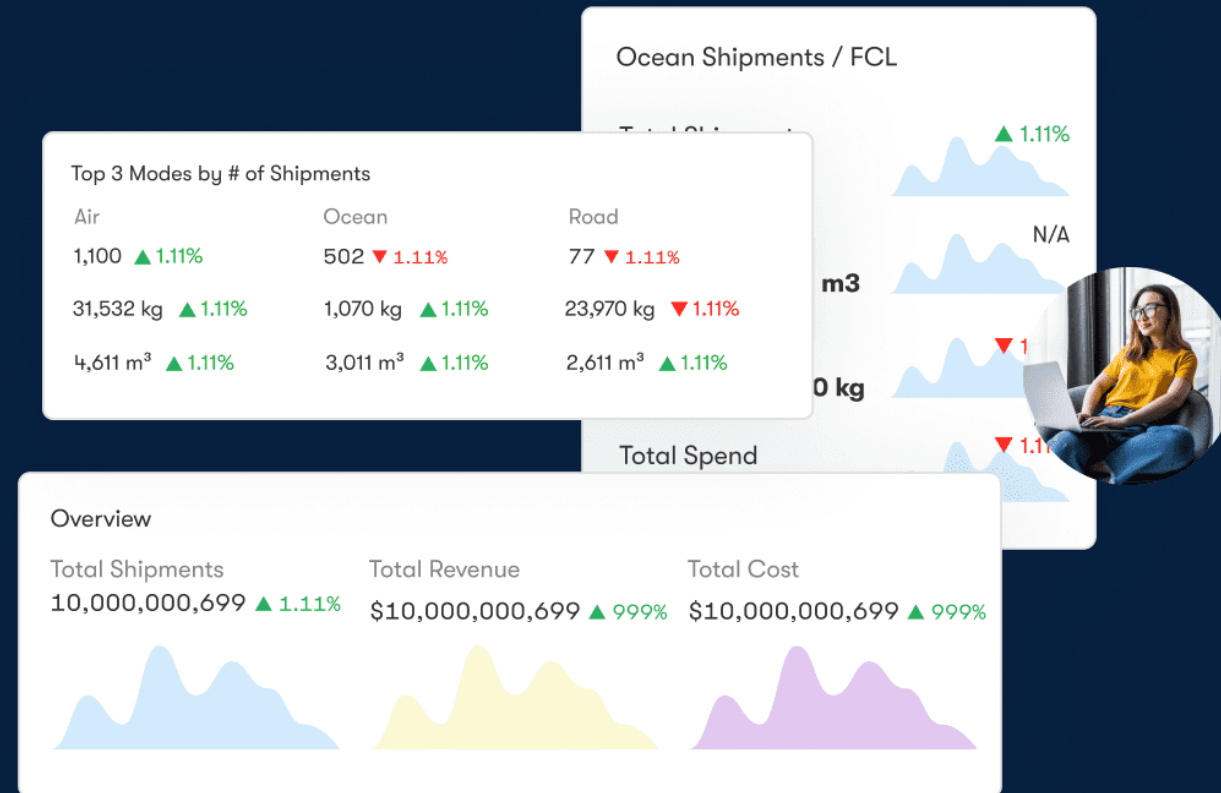


# Customised Reporting & Analytics

When you rely on your logistics service provider for reports, the data quickly becomes stale.

Our built-in configurable reports provide you with critical real-time insights into your supply chain, without the waiting.

Real-time analytics help you optimise your supply chain process and make informed decisions to help increase operational efficiencies.





We rely upon Denholm Good Logistics real-time tracking solution Connect regularly as it provides us with accurate real-time order visibility that we require to keep us updated with our ongoing consignments.

Connect provides accurate real-time updates and allows us to personalize and attach relevant documentation that relates to each shipment.

It has been crucial in helping us plan, manage, and optimise our supply chain and we would recommend it to any business looking to efficiently streamline their supply chain process.

**Reiss Digby**

Operations Manager, Lounge



For us Connect has provided the below benefits

- Quick turnaround to queries, reducing the need for calls and emails thus saving us precious time
- We can access all our documents with one click
- Real-time access to container information enabling us to deal with queries and manage our customer expectations

Ultimately, Connect saves us time, improves our planning, and enables us to manage both internal and external stakeholders effectively and in a timely fashion.

**Gavin Wenborn**

Compleat Food Group





Before using Connect the management of our supply chain was based on a mixture of emails and spreadsheets, which needed manually updating. Connect now allows us to view all our shipments through one portal. Whether it is looking for updated arrival times, or checking documentation, Connect has made our transport process much more efficient.

**Adam Blake**

I love my pet



# CONNECT

PLAN MANAGE OPTIMISE

For more information, contact your  
account manager or email  
[sales@denholm-logistics.com](mailto:sales@denholm-logistics.com)

